

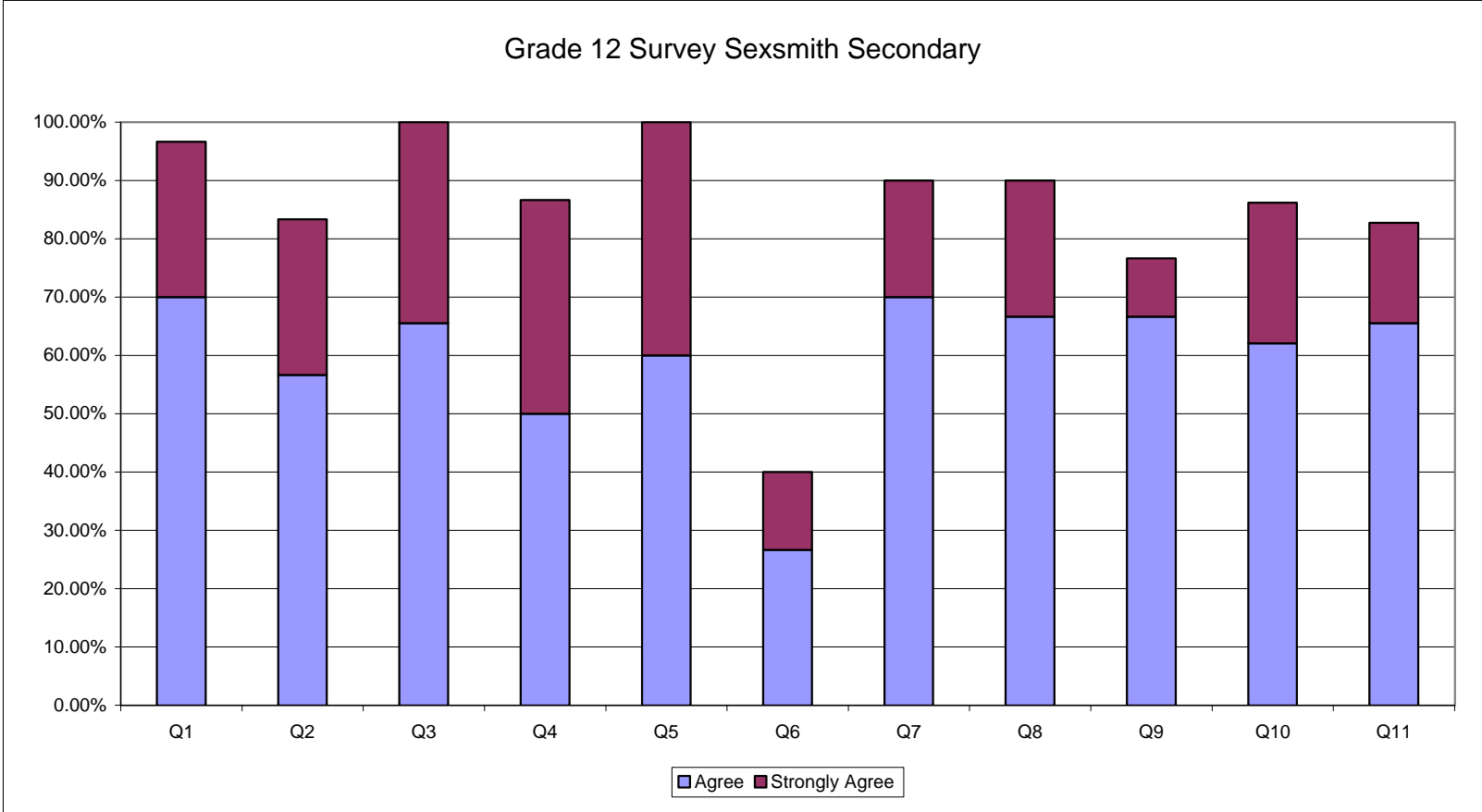
Grade 12 Survey
Sexsmith Secondary School

Number of surveys received: 15	Responses	Mean	Strongly Disagree	Disagree	Agree	Strongly Agree	Total
1. I know what I am expected to learn at school.	15	3.20	0.00%	0.00%	80.00%	20.00%	100.00%
2. I am being challenged to do my best.	15	2.80	6.67%	33.33%	33.33%	26.67%	100.00%
3. I know how students are supposed to behave in my school.	15	3.07	6.67%	0.00%	73.33%	20.00%	100.00%
4. I have the opportunity to make choices about the courses I can take.	15	3.00	6.67%	6.67%	66.67%	20.00%	100.00%
5. I am clear on what behaviour is expected of students in my school.	15	2.80	6.67%	20.00%	60.00%	13.33%	100.00%
6. I have concerns for my safety while at school.	15	1.93	33.33%	40.00%	26.67%	0.00%	100.00%
7. Teachers give me the help and support I need to help me learn.	15	2.67	6.67%	40.00%	33.33%	20.00%	100.00%
8. Teachers encourage me to do well and get good grades.	15	2.80	13.33%	20.00%	40.00%	26.67%	100.00%
9. Teachers use a variety of approaches to meet my individual learning needs.	15	2.27	26.67%	26.67%	40.00%	6.67%	100.00%
10. I have access to a school computer 3 or more times a week.	15	2.93	13.33%	13.33%	40.00%	33.33%	100.00%
11. Overall, I have learned a lot from the courses which I have taken in school.	15	3.13	0.00%	13.33%	60.00%	26.67%	100.00%
How much is high school helping you IMPROVE in the following areas:	Responses	Mean	Very Little	Some	A Lot	Total	
12. Basic reading and writing skills.	15	2.00	20.00%	60.00%	20.00%	100.00%	
13. Speaking.	13	2.00	15.38%	69.23%	15.38%	100.00%	
14. Listening.	14	2.07	14.29%	64.29%	21.43%	100.00%	
15. Creative thinking.	14	2.14	14.29%	57.14%	28.57%	100.00%	
16. Ability to learn on my own.	14	2.21	7.14%	64.29%	28.57%	100.00%	
17. Problem solving.	14	2.21	0.00%	78.57%	21.43%	100.00%	
18. Mathematical skills.	15	2.00	20.00%	60.00%	20.00%	100.00%	
19. Leadership.	15	1.53	46.67%	53.33%	0.00%	100.00%	
20. Self-confidence.	13	2.00	23.08%	53.85%	23.08%	100.00%	
21. Decision-making.	14	2.00	28.57%	42.86%	28.57%	100.00%	
22. Getting along with others.	14	2.29	0.00%	71.43%	28.57%	100.00%	
23. Applying knowledge to real life situations.	15	1.93	33.33%	40.00%	26.67%	100.00%	
24. Computer skills.	12	1.75	33.33%	58.33%	8.33%	100.00%	
25. Managing time.	15	1.87	20.00%	73.33%	6.67%	100.00%	
26. Researching a topic.	15	2.13	6.67%	73.33%	20.00%	100.00%	

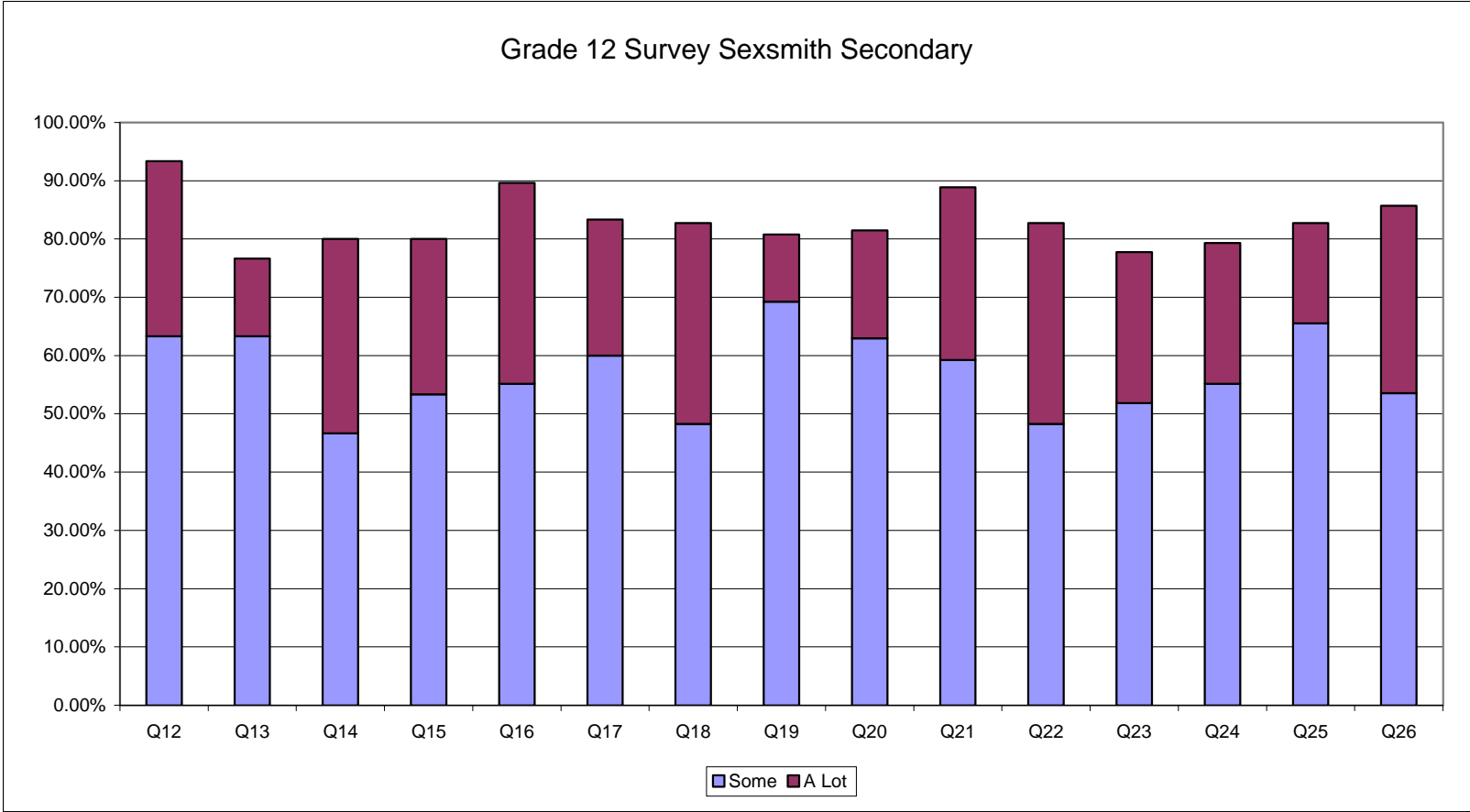
Grade 12 Survey
Sexsmith Secondary School

	Responses	Mean	Very Dissatisfied	Dissatisfied	Satisfied	Very Satisfied	Total
27. The amount of homework you have.	15	2.33	13.33%	40.00%	46.67%	0.00%	100.00%
28. How you are marked.	15	2.73	0.00%	40.00%	46.67%	13.33%	100.00%
29. The way your achievement is recognized.	15	2.80	0.00%	33.33%	53.33%	13.33%	100.00%
30. What the school tells your parents about how well you are doing.	15	2.60	6.67%	33.33%	53.33%	6.67%	100.00%
31. How much you are learning.	15	2.93	0.00%	26.67%	53.33%	20.00%	100.00%
32. The variety of learning activities in the classroom.	15	2.53	6.67%	33.33%	60.00%	0.00%	100.00%
33. The emphasis on basic reading, writing and mathematical skills.	15	2.87	6.67%	6.67%	80.00%	6.67%	100.00%
34. Your skills in using computers.	15	2.47	13.33%	33.33%	46.67%	6.67%	100.00%
35. Discipline in the school.	15	2.13	33.33%	20.00%	46.67%	0.00%	100.00%
36. School rules in general.	15	2.33	26.67%	13.33%	60.00%	0.00%	100.00%
37. The way other students treat you.	15	2.80	6.67%	26.67%	46.67%	20.00%	100.00%
38. The variety and quality of extracurricular activities at your school (sports, school plays, concerts, clubs, student council activities).	15	2.73	26.67%	0.00%	46.67%	26.67%	100.00%
39. The services of the school library.	15	2.93	6.67%	20.00%	46.67%	26.67%	100.00%
40. The school building, grounds and equipment.	15	2.80	6.67%	20.00%	60.00%	13.33%	100.00%
41. The cleanliness of your school.	15	2.53	26.67%	6.67%	53.33%	13.33%	100.00%
42. The opportunity to be involved in decisions that affect student life in your school.	15	2.47	6.67%	40.00%	53.33%	0.00%	100.00%
43. The opportunities you have to be involved in activities outside of the classroom.	15	2.67	6.67%	20.00%	73.33%	0.00%	100.00%
44. The overall quality of education that you are receiving in you school.	15	3.00	0.00%	13.33%	73.33%	13.33%	100.00%
45. Your school overall.	15	2.93	13.33%	6.67%	53.33%	26.67%	100.00%
Number of surveys received: 15	Responses	Academic University Preparation	Diploma / Career and Technology Studies	Total			
46. What type of program are you enrolled in?	10	40.00%	60.00%	100.00%			

Grade 12 Survey
Sexsmith Secondary School



Grade 12 Survey
Sexsmith Secondary School



Grade 12 Survey
Sexsmith Secondary School

