

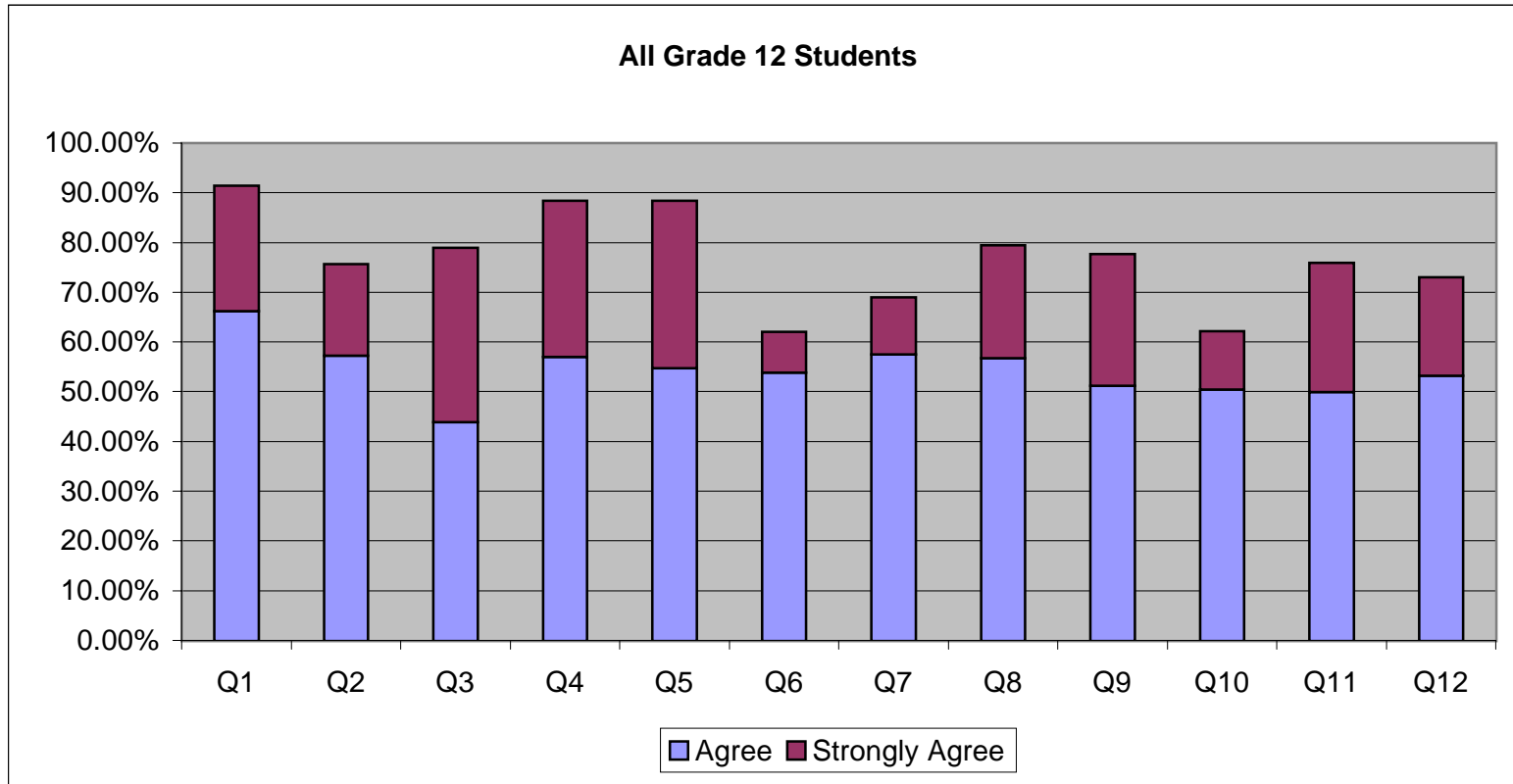
Peace Wapiti School Board #33 Grade 12 Students

Number of surveys received: 222	Responses	Mean	Strongly Disagree	Disagree	Agree	Strongly Agree	Total
1. I know what I am expected to learn at school	222	3.14	2.25%	6.31%	66.22%	25.23%	100.00%
2. I am being challenged to do my best	222	2.90	4.50%	19.82%	57.21%	18.47%	100.00%
3. I have the opportunity to make choices about the courses I can take	223	3.04	9.42%	11.66%	43.95%	34.98%	100.00%
4. I am clear on what behaviour is expected of students in my school	223	3.17	2.69%	8.97%	56.95%	31.39%	100.00%
5. I feel safe while at school	223	3.18	4.04%	7.62%	54.71%	33.63%	100.00%
6. Discipline, in general, is consistent and fair	221	2.56	14.48%	23.53%	53.85%	8.14%	100.00%
7. School rules, in general, are clear and fair	219	2.72	8.22%	22.83%	57.53%	11.42%	100.00%
8. Teachers give me the help and support I need to learn	224	2.97	4.91%	15.63%	56.70%	22.77%	100.00%
9. Teachers encourage me to do well and get good grades	219	3.00	3.65%	18.72%	51.14%	26.48%	100.00%
10. Teachers use a variety of approaches to meet my individual learning needs	222	2.64	9.91%	27.93%	50.45%	11.71%	100.00%
11. I have adequate access to school computers	224	2.94	7.59%	16.52%	50.00%	25.89%	100.00%
12. Overall the courses I have taken in school have adequately prepared me for the future	222	2.84	8.56%	18.47%	53.15%	19.82%	100.00%
	Responses	Mean	Very little	Some	A lot	Total	
13. Basic reading and writing skills	218	2.26	13.30%	47.25%	39.45%	100.00%	
14. Speaking	210	1.93	25.71%	55.71%	18.57%	100.00%	
15. Listening	213	2.01	21.60%	55.87%	22.54%	100.00%	
16. Creative thinking	213	2.08	21.13%	49.77%	29.11%	100.00%	
17. Ability to learn on my own	218	2.11	19.72%	49.08%	31.19%	100.00%	
18. Problem solving	214	2.01	17.76%	63.08%	19.16%	100.00%	
19. Mathematical skills	212	2.14	21.70%	42.45%	35.85%	100.00%	
20. Leadership	207	1.91	32.37%	44.44%	23.19%	100.00%	
21. Self-confidence	207	2.04	23.67%	48.79%	27.54%	100.00%	
22. Decision-making	209	2.08	18.18%	55.50%	26.32%	100.00%	
23. Getting along with others	208	2.21	16.83%	45.67%	37.50%	100.00%	
24. Applying knowledge to real life situations	211	1.85	33.65%	47.39%	18.96%	100.00%	
25. Computer skills	208	1.99	29.81%	41.83%	28.37%	100.00%	
26. Managing time	209	1.87	30.14%	52.63%	17.22%	100.00%	
27. Researching a topic	211	1.99	22.75%	55.92%	21.33%	100.00%	

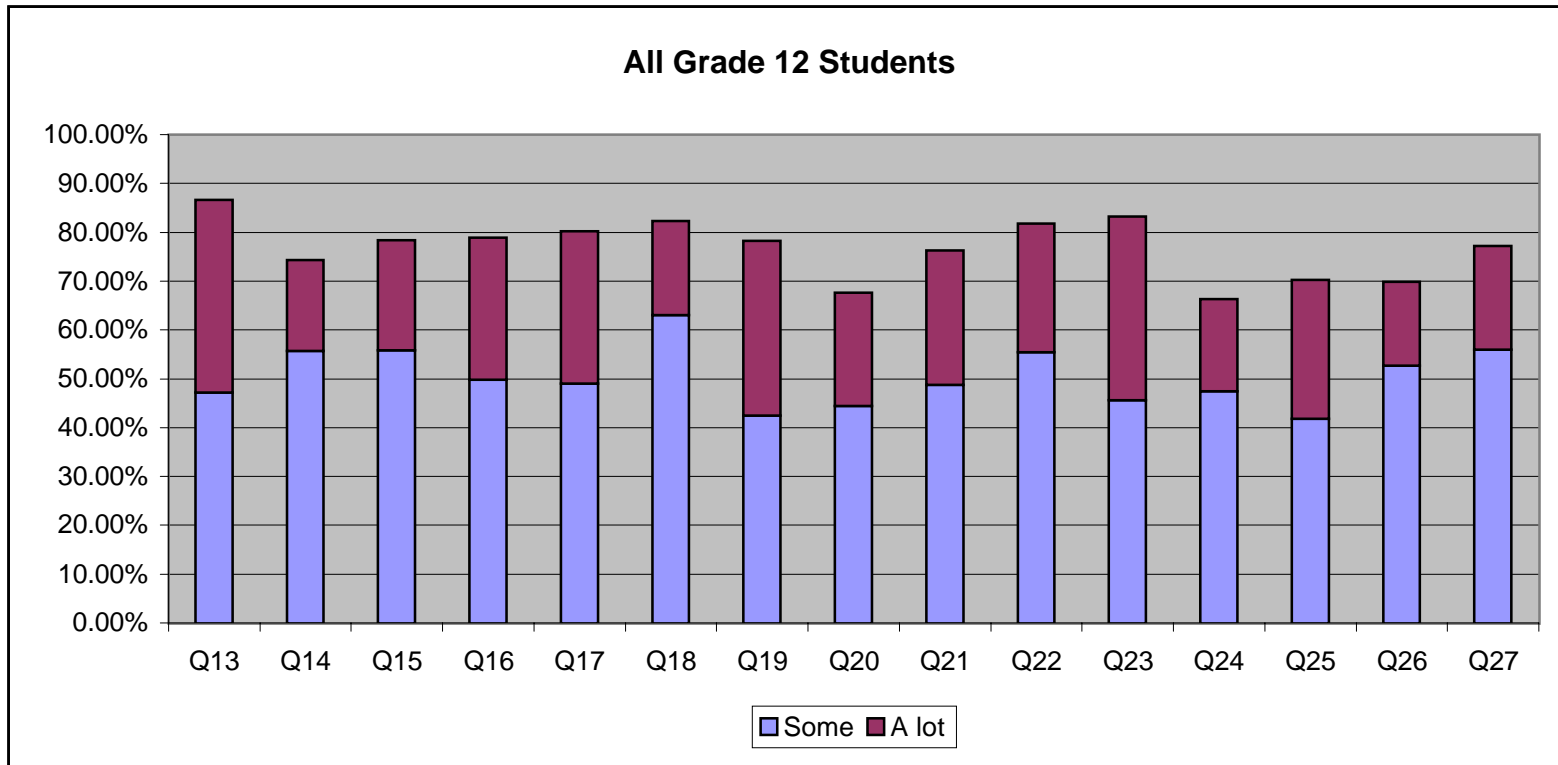
Peace Wapiti School Board #33 Grade 12 Students

	Responses	Mean	Very dissatisfied	Dissatisfied	Satisfied	Very Satisfied	Total
28. The amount of homework you have	215	2.73	8.37%	21.86%	58.14%	11.63%	100.00%
29. How you are marked	215	2.78	6.98%	20.47%	60.47%	12.09%	100.00%
30. The way your achievement is recognized	215	2.72	8.37%	22.79%	57.21%	11.63%	100.00%
31. The communication between school and home regarding your progress	213	2.83	6.57%	17.37%	62.91%	13.15%	100.00%
32. The variety of learning activities in the classroom	211	2.64	9.48%	27.49%	52.61%	10.43%	100.00%
33. The emphasis on basic reading, writing and mathematical skills	215	2.81	6.51%	14.42%	70.23%	8.84%	100.00%
34. Your skills in using computers	215	2.72	10.70%	24.19%	47.91%	17.21%	100.00%
35. The way other students treat you	178	3.10	6.74%	8.43%	53.37%	31.46%	100.00%
36. The variety and quality of extracurricular activities at you school (sports, school plays, concerts, club, student council activities)	214	2.73	11.68%	21.03%	49.53%	17.76%	100.00%
37. The service of the school library	215	2.87	7.91%	18.60%	51.63%	21.86%	100.00%
38. The school building, grounds and equipment	216	2.61	15.28%	21.76%	49.54%	13.43%	100.00%
39. The cleanliness of your school	217	2.90	9.68%	16.13%	48.39%	25.81%	100.00%
40. The opportunity to be involved in decisions that affect student life in your school	214	2.51	15.42%	24.77%	53.27%	6.54%	100.00%
41. The opportunities you have to be involved in activities outside of the classroom	214	2.75	8.41%	21.03%	57.94%	12.62%	100.00%
42. The overall quality of education you are receiving in your school	215	2.87	8.37%	14.42%	59.07%	18.14%	100.00%
43. Your school overall	215	2.89	10.23%	13.49%	53.49%	22.79%	100.00%

Peace Wapiti School Board #33 Grade 12 Students



Peace Wapiti School Board #33 Grade 12 Students



Peace Wapiti School Board #33 Grade 12 Students

