

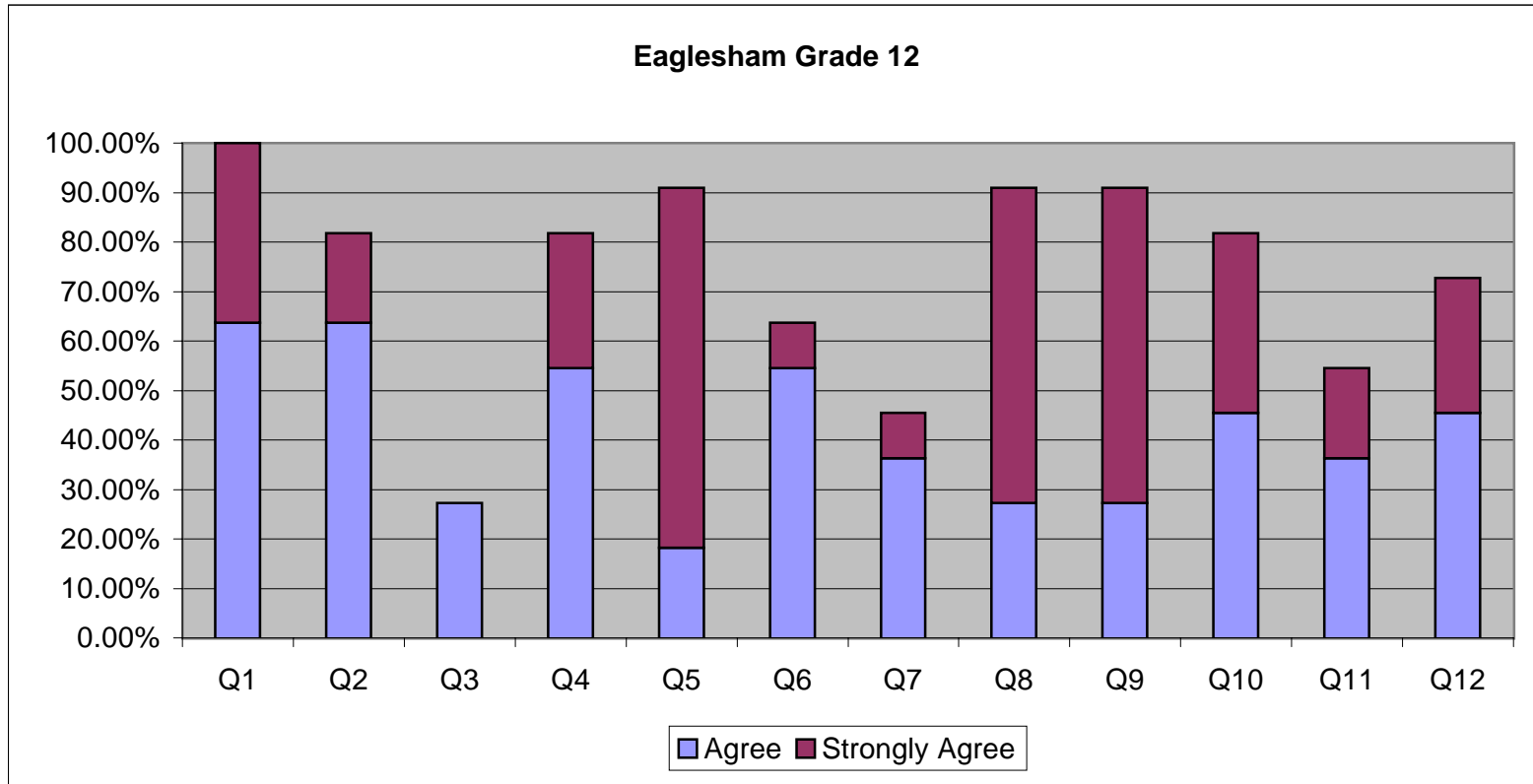
Eglesham School Grade 12 Students

Number of surveys received: 11	Responses	Mean	Strongly Disagree	Disagree	Agree	Strongly Agree	Total
1. I know what I am expected to learn at school	11	3.36	0.00%	0.00%	63.64%	36.36%	100.00%
2. I am being challenged to do my best	11	3.00	0.00%	18.18%	63.64%	18.18%	100.00%
3. I have the opportunity to make choices about the courses I can take	11	1.82	45.45%	27.27%	27.27%	0.00%	100.00%
4. I am clear on what behaviour is expected of students in my school	11	3.09	0.00%	18.18%	54.55%	27.27%	100.00%
5. I feel safe while at school	11	3.64	0.00%	9.09%	18.18%	72.73%	100.00%
6. Discipline, in general, is consistent and fair	11	2.55	18.18%	18.18%	54.55%	9.09%	100.00%
7. School rules, in general, are clear and fair	11	2.55	0.00%	54.55%	36.36%	9.09%	100.00%
8. Teachers give me the help and support I need to learn	11	3.55	0.00%	9.09%	27.27%	63.64%	100.00%
9. Teachers encourage me to do well and get good grades	11	3.45	9.09%	0.00%	27.27%	63.64%	100.00%
10. Teachers use a variety of approaches to meet my individual learning needs	11	3.09	9.09%	9.09%	45.45%	36.36%	100.00%
11. I have adequate access to school computers	11	2.73	0.00%	45.45%	36.36%	18.18%	100.00%
12. Overall the courses I have taken in school have adequately prepared me for the future	11	3.00	0.00%	27.27%	45.45%	27.27%	100.00%
	Responses	Mean	Very little	Some	A lot	Total	
13. Basic reading and writing skills	11	2.27	18.18%	36.36%	45.45%	100.00%	
14. Speaking	11	2.09	18.18%	54.55%	27.27%	100.00%	
15. Listening	11	2.18	9.09%	63.64%	27.27%	100.00%	
16. Creative thinking	11	2.27	18.18%	36.36%	45.45%	100.00%	
17. Ability to learn on my own	11	2.55	0.00%	45.45%	54.55%	100.00%	
18. Problem solving	11	2.27	0.00%	72.73%	27.27%	100.00%	
19. Mathematical skills	11	2.18	9.09%	63.64%	27.27%	100.00%	
20. Leadership	11	2.18	18.18%	45.45%	36.36%	100.00%	
21. Self-confidence	11	2.09	36.36%	18.18%	45.45%	100.00%	
22. Decision-making	11	2.27	9.09%	54.55%	36.36%	100.00%	
23. Getting along with others	10	2.30	20.00%	30.00%	50.00%	100.00%	
24. Applying knowledge to real life situations	10	2.00	20.00%	60.00%	20.00%	100.00%	
25. Computer skills	11	1.91	36.36%	36.36%	27.27%	100.00%	
26. Managing time	11	1.73	36.36%	54.55%	9.09%	100.00%	
27. Researching a topic	11	2.36	9.09%	45.45%	45.45%	100.00%	

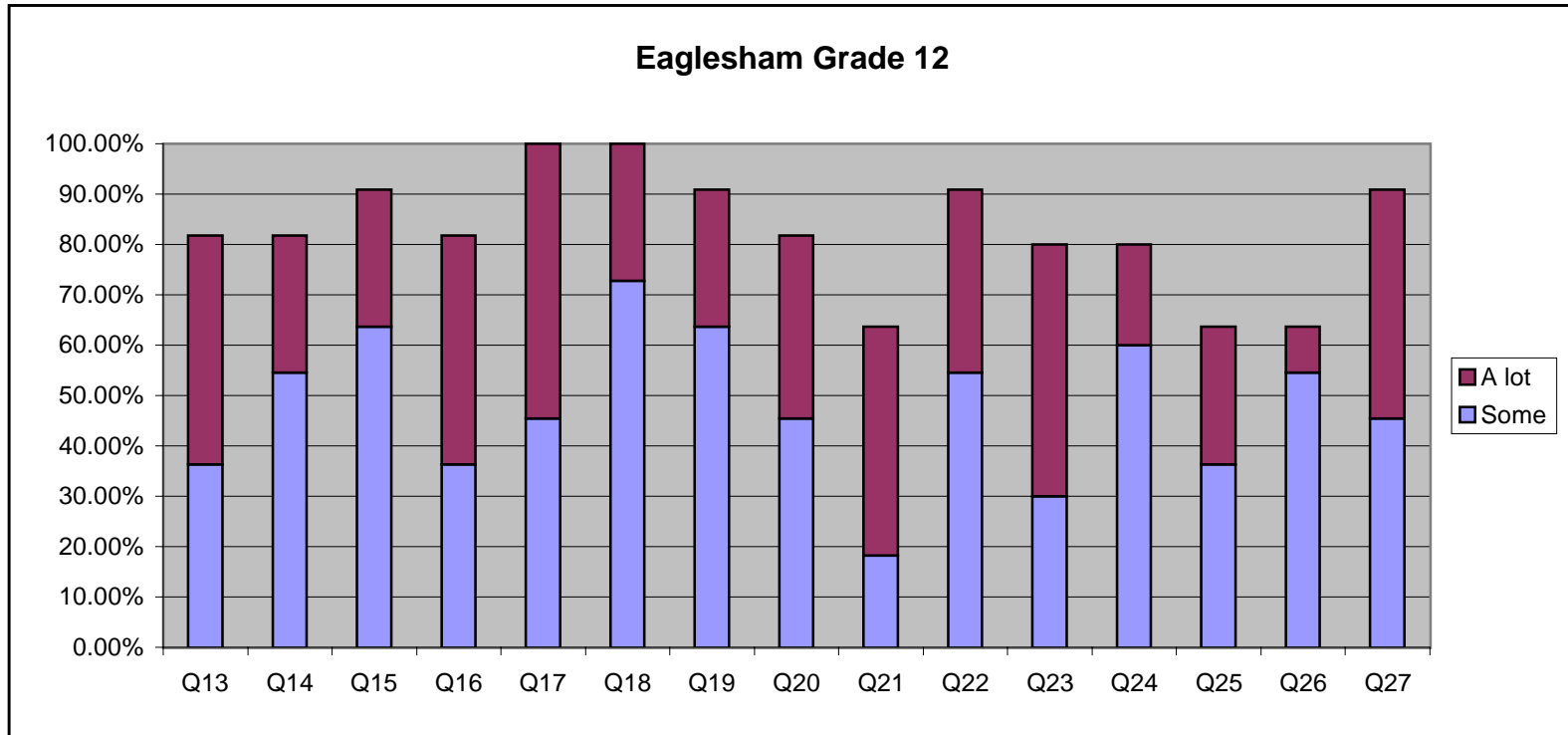
Eaglesham School Grade 12 Students

	Responses	Mean	Very dissatisfied	Dissatisfied	Satisfied	Very Satisfied	Total
28. The amount of homework you have	10	2.80	0.00%	20.00%	80.00%	0.00%	100.00%
29. How you are marked	9	3.33	0.00%	0.00%	66.67%	33.33%	100.00%
30. The way your achievement is recognized	9	3.11	0.00%	0.00%	88.89%	11.11%	100.00%
31. The communication between school and home regarding your progress	10	3.10	0.00%	10.00%	70.00%	20.00%	100.00%
32. The variety of learning activities in the classroom	10	2.90	0.00%	20.00%	70.00%	10.00%	100.00%
33. The emphasis on basic reading, writing and mathematical skills	10	2.80	10.00%	10.00%	70.00%	10.00%	100.00%
34. Your skills in using computers	10	2.40	20.00%	20.00%	60.00%	0.00%	100.00%
35. The way other students treat you	8	3.50	0.00%	12.50%	25.00%	62.50%	100.00%
36. The variety and quality of extracurricular activities at you school (sports, school plays, concerts, club, student council activities)	10	2.40	10.00%	50.00%	30.00%	10.00%	100.00%
37. The service of the school library	10	1.90	30.00%	50.00%	20.00%	0.00%	100.00%
38. The school building, grounds and equipment	10	2.80	10.00%	0.00%	90.00%	0.00%	100.00%
39. The cleanliness of your school	10	3.50	0.00%	20.00%	10.00%	70.00%	100.00%
40. The opportunity to be involved in decisions that affect student life in your school	10	2.60	20.00%	0.00%	80.00%	0.00%	100.00%
41. The opportunities you have to be involved in activities outside of the classroom	10	2.80	0.00%	20.00%	80.00%	0.00%	100.00%
42. The overall quality of education you are receiving in your school	10	3.30	0.00%	20.00%	30.00%	50.00%	100.00%
43. Your school overall	10	3.10	0.00%	20.00%	50.00%	30.00%	100.00%

Eaglesham School Grade 12 Students



Eglesham School Grade 12 Students



Eglesham School Grade 12 Students

